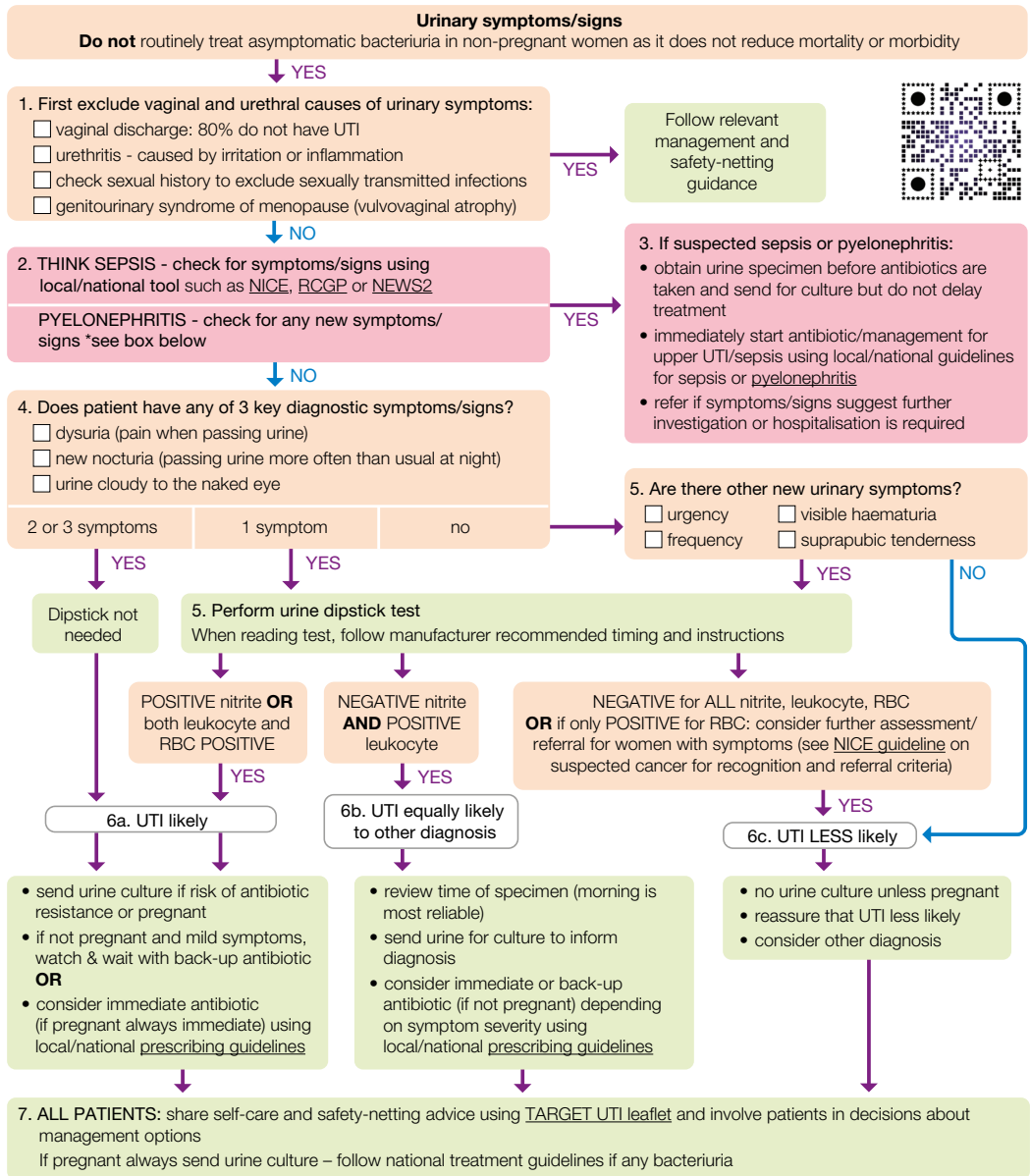


WOMEN UNDER 65 YEARS

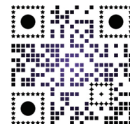
Diagnostic decision tool for women (under 65 years) with suspected UTI

Excludes women with recurrent UTI (2 episodes in last 6 months, or 3 episodes in last 12 months) or who have a urinary catheter. This flowchart will be suitable for some women over 65 years in the community setting. When using this tool, refer to the [Background](#) and the corresponding web text for more information on clinical decision making and target groups.



7. **ALL PATIENTS:** share self-care and safety-netting advice using [TARGET UTI leaflet](#) and involve patients in decisions about management options

If pregnant always send urine culture – follow national treatment guidelines if any bacteriuria



***Signs of pyelonephritis:**

- kidney pain/tenderness in back under ribs
 - flu like illness†
 - shaking chills (rigors) or temperature 37.9°C or above†
 - nausea/vomiting†
- †rule out other causes

KEY:

- Suspected sepsis alert
- Action advised
- UTI symptom
- Other advice